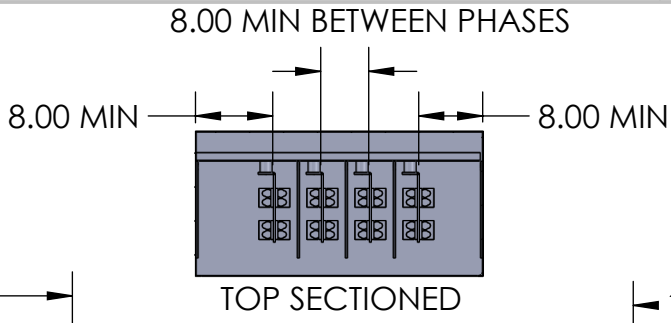


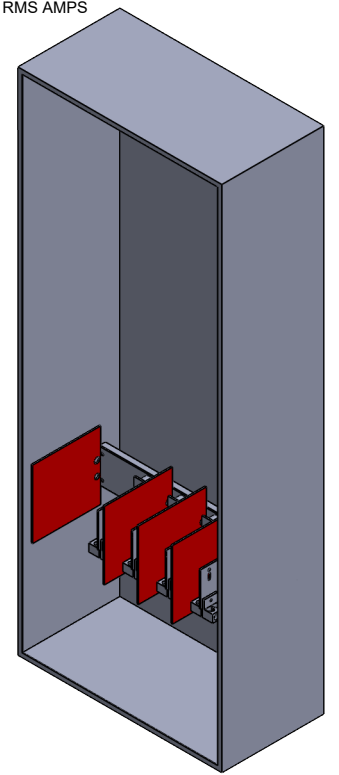
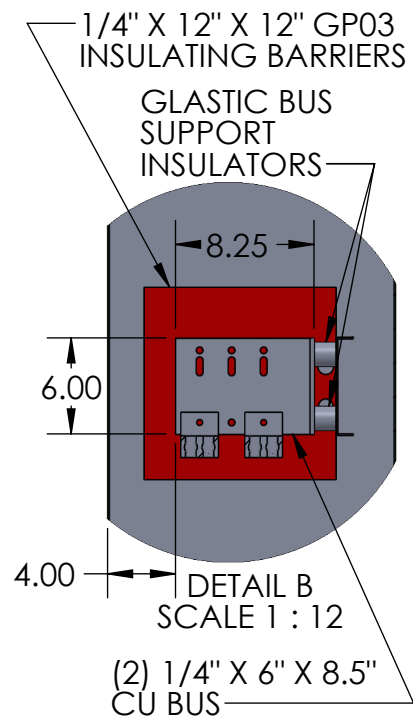
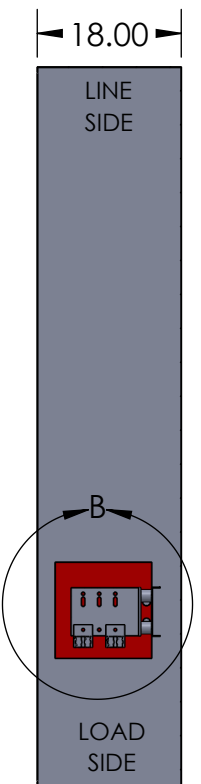
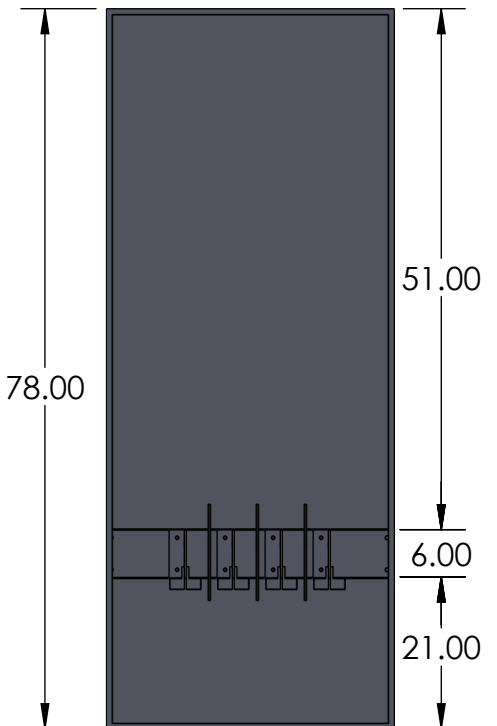
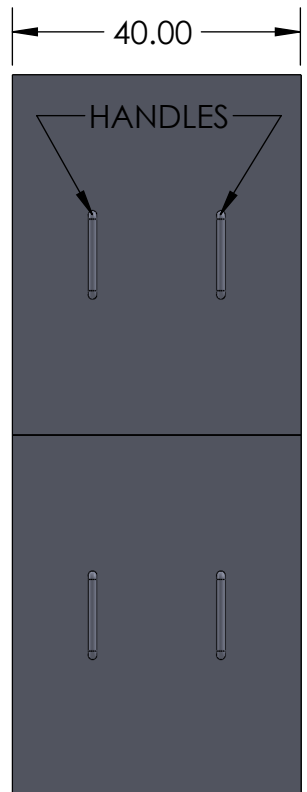
2

1



- NOTES:
1. BOX AND COVER CONSTRUCTION- GALV STEEL (12GA)  
FINISH: POWDER COAT GRAY ENAMEL
  2. BUS BARS- COPPER 98% CONDUCTIVITY
  3. BOX SHALL HAVE NAME PLATE WITH MANUFACTURER'S NAME
  4. FRONT COVERS SHALL BE SEALABLE WITH (2) HANDLES
  5. LINE SIDE: PROVISIONS FOR (6) 600 MCM - LUGS NOT INCLUDED
  6. LOAD SIDE: MOUNT UP TO (7) 600 MCM - MECHANICAL LUGS INCLUDED
  7. NEMA 3R CONSTRUCTION INCLUDES SEAM WELDED BODY, OUTSIDE MOUNTING TABS ON ALL FOUR CORNERS, GASKETED COVERS
  8. \*120/208v BLACK LABEL WITH WHITE LETTERING LOCATION ON INSIDE AND OUTSIDE OF THE ENCLOSURE
  9. FOR 120/208V SERVICE ONLY
  10. FOR 277/480V SERVICE SEE 348210-72-N3R OR 348211-96-N3R
- SHORT CIRCUIT CURRENT RATING 100,000 SYM RMS AMPS

B



B

A

			MATL: 12 GA GALV	DRAWING TITLE: EO-78-N3R CUT SHEET
			FINISH: ANSI 61 GREY POWDER COAT	PART #: NAV-EO-78-9073B-N3R
155 MARCUS BLVD HAUPPAUGE, NEW YORK 11788 PH: (718) 257-2111 FAX: (718) 257-2626			WEIGHT:	DESCRIPTION: NEMA 3R SERVICE ENTRANCE BOX 120/208V SERVICE UP TO 6 SETS LINE SIDE SPECIFIED TO CON ED EO-9073-B
UNLESS OTHERWISE SPECIFIED: ALL DIMENSIONS ARE NOMINAL UNLESS EXPLICITLY SPECIFIED OTHERWISE			UNLESS OTHERWISE SPECIFIED 1. REMOVE ALL BURRS AND BREAK ALL SHARP EDGES .015 X 45° OR .015R 2. DIMENSIONAL LIMITS APPLY AFTER PLATING 3. 125/ MACHINED SURFACES EXCEPT AS NOTED	
DRAWN BY: N. BOSETTI DATE: 12/30/2025 APPROVED BY:	PROPRIETARY AND CONFIDENTIAL THE INFORMATION CONTAINED IN THIS DRAWING IS THE SOLE PROPERTY OF Nav-Tech Inc. ANY REPRODUCTION IN PART OR AS A WHOLE WITHOUT THE WRITTEN PERMISSION OF Nav-Tech Inc. IS PROHIBITED.		DO NOT SCALE DRAWING	SCALE: 1:24 SIZE A SHEET 1 OF 1 REV. 10

A

2

1